

Goedhart VCB 82567

Specifications

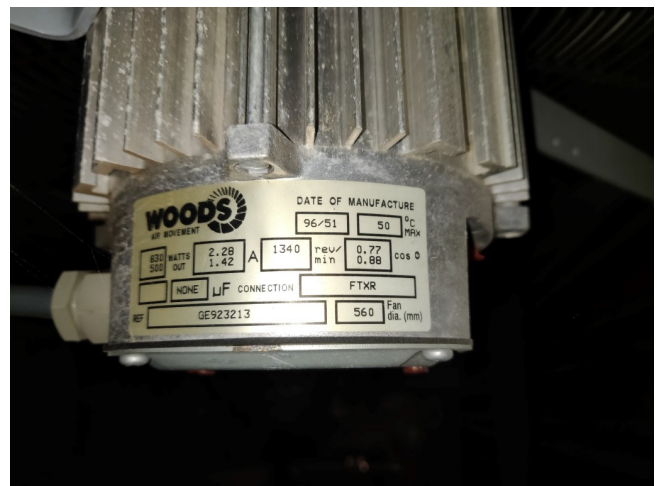
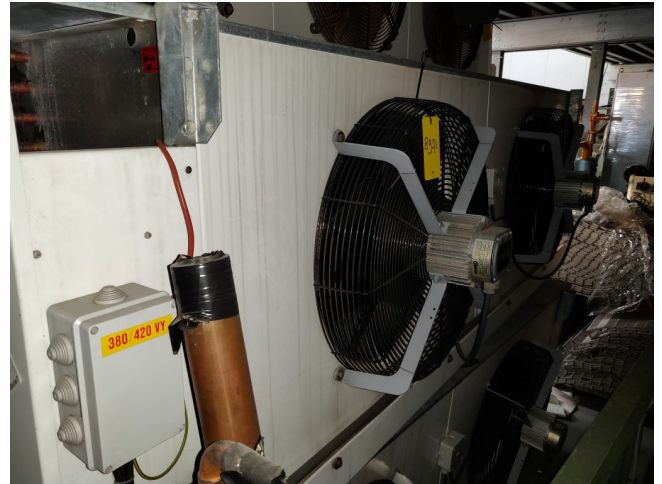
Производитель	Goedhart
Тип	VCB 82567
кВт	34,3
Хладагент	Freon
К-во вентиляторов	2
Расстояние между ламелями, мм	7
Оттайка	Electric
Поток воздуха м ³ /час	19.714
Размеры	2656x1110x920 mm (LxWxH)
Примечания	For more information see attached pdf below // Page 10 // VCI is similar to VCB
Stock	2



Description

Used Goedhart VCB 82567

Size: 2656x1110x920 mm (LxWxH) · Weight: 333 · Fin space: 7 · m³/h: 19.714 · Fans: 2 · Hertz fans: 50 · Rpm: 1340 · Refrigerant: R404A · Brand: Goedhart · Model: VCB 82567 **All components of this used evaporator will be tested on good working, leak free condition (electro engines), coils, bearings) Choosing HOSBV means buying with warranty. We perform a industrial cleaning and rust spots will be covered. Also, we can arrange your shipment.





Your partner for used commercial and industrial refrigeration equipment



Industriële Luchtcoolers / Industrial Aircoolers

Lamelafstand / Finspacing															7 mm													
Type	Type	Type	Type	Type	Type	Type	Type	Type	Type	Type	Type	Type	Type	Type	Algemeen / Dimensions										Aansluitingen / Connections		Elektrische aansluiting / Electric detail	
															L	B	H	C	E1	E2	E3	D1	D2	D3	I	K	Total blok en kabel / Total coil and pipe	Zwaartepunt / Gravity
8.1.40.7	14	5.1	4.0	3265	33	9	90	1156	770	690	600	756	578	12	16	19	2.68	4.61	20									
8.1.40.7	0400	8.4	4.8	3147	44	11	96	1156	870	820	700	756	578	12	22	19	3.45	6.13	20									
8.1.40.7	14	7.7	5.7	4960	45	12	97	1256	770	720	600	856	628	12	22	19	3.96	5.22	22.5									
8.1.40.7	0400	8.2	7.0	4754	61	16	116	1256	870	720	700	856	628	12	22	19	4.85	7.11	22.5									
8.1.50.7	14	10.3	7.8	7073	57	15	122	1456	890	720	700	1056	728	12	22	19	4.49	6.64	25									
8.1.50.7	0500	12.4	8.4	6798	76	19	143	1456	990	720	800	1056	728	12	28	19	5.65	8.09	25									
8.1.50.7	14	15.1	11.1	10186	84	21	166	1656	1010	800	800	1156	778	12	28	19	6.18	9.10	27.5									
8.1.50.7	0500	16.8	12.7	9864	112	28	180	1656	1110	800	800	1156	778	12	28	19	8.10	11.42	27.5									
8.1.60.7	14	19.7	14.8	12734	114	29	206	1656	1010	1120	800	1256	828	16	35	19	8.11	10.96	27.5									
8.1.60.7	0600	22.4	17.8	12394	152	38	243	1656	1110	1120	900	1256	828	16	35	19	11.34	13.91	27.5									
8.2.40.7	3x	16.2	8.1	6283	86	17	130	1656	770	680	600	1456	928	12	22	19	4.96	8.24	38									
8.2.40.7	0400	12.7	8.5	6283	89	22	156	1656	870	620	700	1456	928	12	28	19	6.08	11.08	20									
8.2.40.7	14	16.4	9.4	5916	91	25	160	1656	770	720	600	1656	1028	12	28	19	6.60	8.95	22.5									
8.2.40.7	0400	18.4	13.9	9495	121	30	182	2056	870	720	700	1656	1028	16	28	19	8.15	12.05	22.5									
8.2.50.7	3x	20.8	10.7	14136	114	25	205	2456	890	720	700	2056	1228	16	35	19	8.14	11.08	25									
8.2.50.7	0500	24.7	18.8	13560	152	38	242	2456	990	720	800	2056	1228	16	35	19	10.08	14.97	25									
8.2.60.7	3x	30.0	23.3	20376	167	31	282	2656	1010	800	800	2556	1328	16	42	35	10.92	15.51	27.5									
8.2.60.7	0500	34.2	25.2	19714	223	35	333	2656	1110	800	800	2556	1328	16	42	35	13.92	20.95	27.5									
8.2.80.7	3x	38.4	30.8	25487	228	51	357	2856	1010	1120	800	2456	1428	16	42	35	14.42	17.62	27.5									
8.2.80.7	0800	46.7	35.8	24754	304	75	424	2856	1110	1120	900	2456	1428	22	42	35	20.25	24.82	27.5									
8.3.40.7	3x	23.3	17.6	14883	137	34	225	2856	770	720	600	2456	1428	16	35	35	9.76	17.86	22.5									
8.3.40.7	0400	27.3	20.3	14236	162	45	270	2856	870	720	700	2456	1428	16	35	35	12.80	17.82	22.5									
8.3.50.7	3x	31.5	23.3	21187	171	43	288	3456	890	720	700	3056	1728	16	42	35	10.88	16.07	25									
8.3.50.7	0500	37.1	28.3	20331	228	52	342	3456	990	720	800	3056	1728	16	42	35	13.73	21.77	25									
8.3.60.7	3x	46.0	34.0	30582	251	60	398	3756	1010	800	800	3128	2228	308	1678	16	42	35	14.96	23.79	27.5							
8.3.60.7	0500	54.7	40.6	29566	324	83	473	3756	1110	800	800	3128	2228	308	1878	22	54	35	23.70	29.81	27.5							
8.3.80.7	3x	59.5	44.7	38181	342	85	507	4056	1010	1120	800	3228	2428	1014	2028	22	54	35	19.55	26.65	27.5							
8.3.80.7	0800	71.1	51.9	37124	456	113	604	4056	1110	1120	900	3228	2428	1014	2028	22	54	35	26.01	35.74	27.5							
8.4.40.7	4x	31.3	23.3	19840	182	45	287	3656	770	720	600	1628	1628	16	42	35	11.08	16.47	22.5									
8.4.40.7	0400	36.7	27.8	18978	243	60	346	3656	870	720	700	1628	1628	16	42	35	13.93	22.17	22.5									